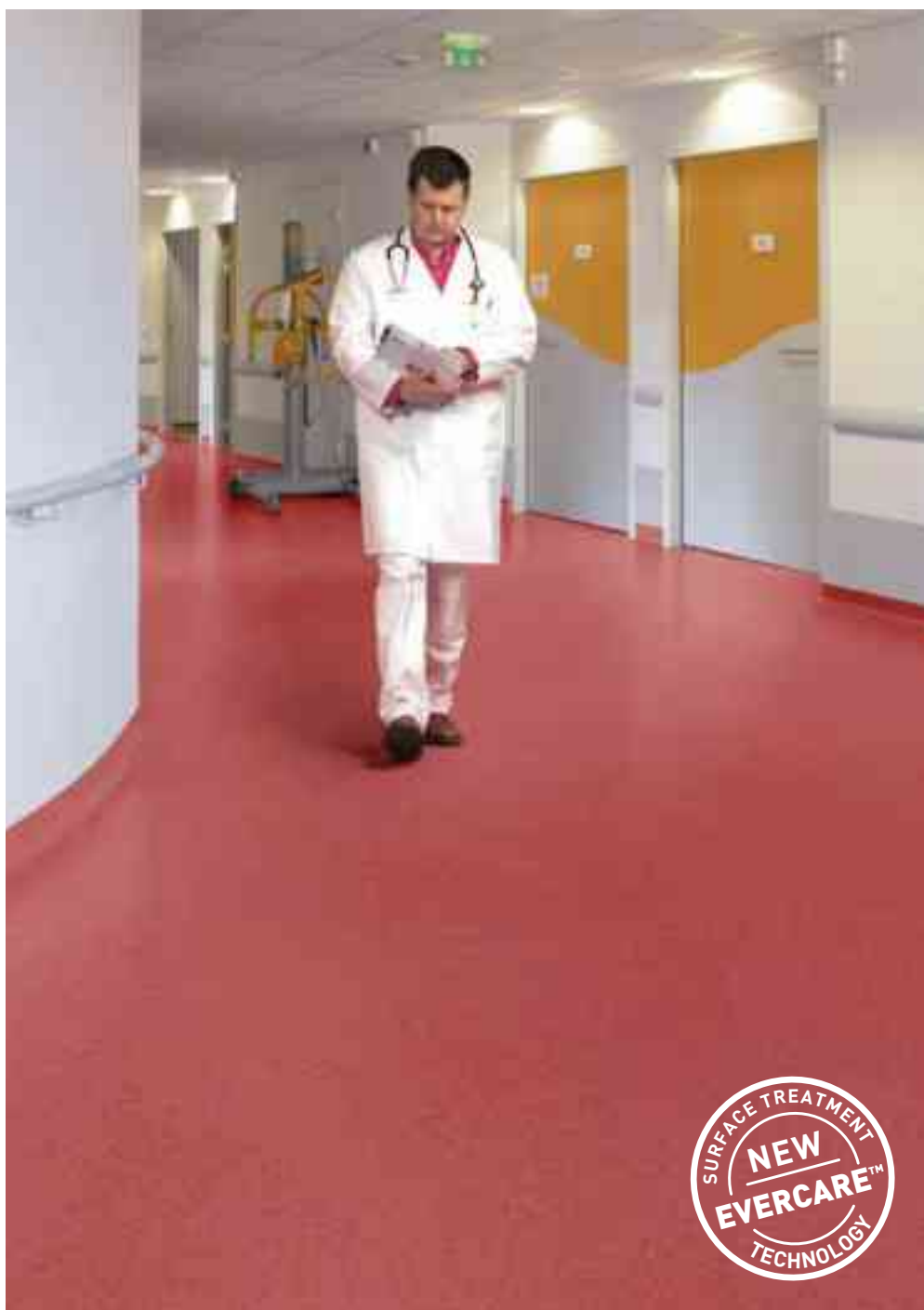


MIPOLAM ESPRIT

gerflor.com



Gerflor[®]
theflooringgroup

MIPOLAM ESPRIT



A small icon of a hand holding a measuring tape, with "2m" written below it.	34-43	Evercare™	A recycling symbol consisting of three chasing arrows forming a triangle.	100 % recyclable
--	-------	-----------	---	------------------



5375 Paprika
NCS: 2060-R / LRV: 18,7



5357 Chervil
NCS: 2060-G80Y / LRV: 38,3



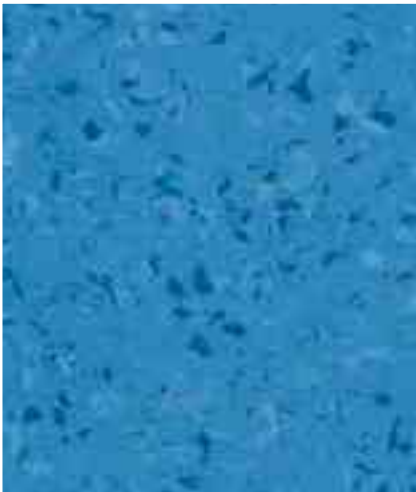
5368 Lavande
NCS: 3055-R40B / LRV: 11,5



5385 Safran
NCS: 2050-Y30R / LRV: 37,2



5347 Cardamon
NCS: 3030-G30Y / LRV: 29,0



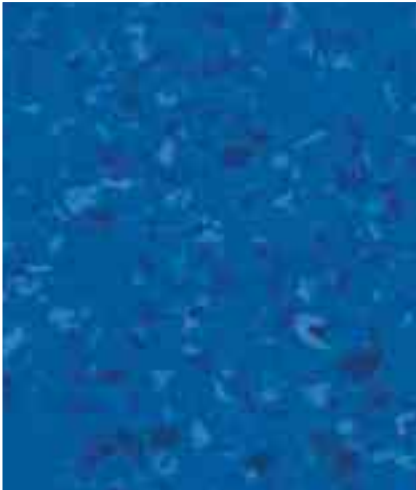
5366 Iris
NCS: 3040-B / LRV: 24,6



5322 Zest
NCS: 1050-Y / LRV: 51,8



5332 Turmeric
NCS: 1030-Y20R / LRV: 60,0



5356 Indigo
NCS: 3060-R80B / LRV: 11,8

MIPOLAM ESPRIT



5330 Smoke
NCS: 4502-B / LRV: 28,3



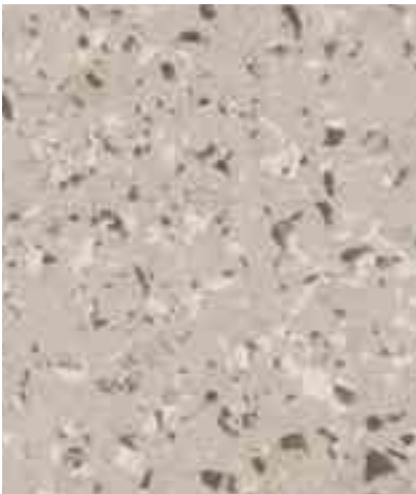
5354 Coriander
NCS: 3005-Y50R / LRV: 38,4



5324 Sesame
NCS: 1505-Y40R / LRV: 54,3



5350 Slate
NCS: 5502-B / LRV: 19,5



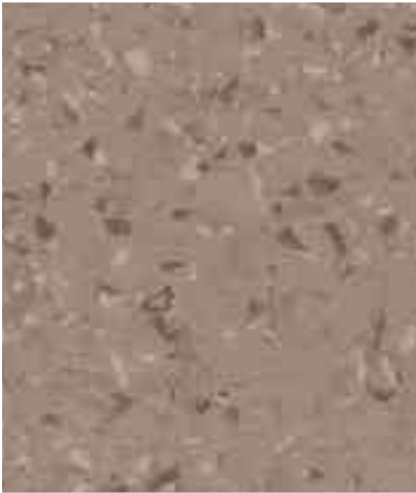
5341 Peanut
NCS: 2002-Y50R / LRV: 42,9



5305 Garlic
NCS: 1002-Y50R / LRV: 64,9



5360 Mixdark
NCS: 7502-B / LRV: 7,0

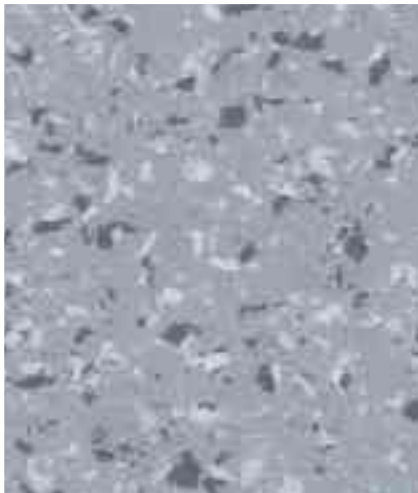


5363 Cinnamon
NCS: 4005-Y50R / LRV: 25,4



5303 Mixbeige
NCS: 1005-Y50R / LRV: 69,5

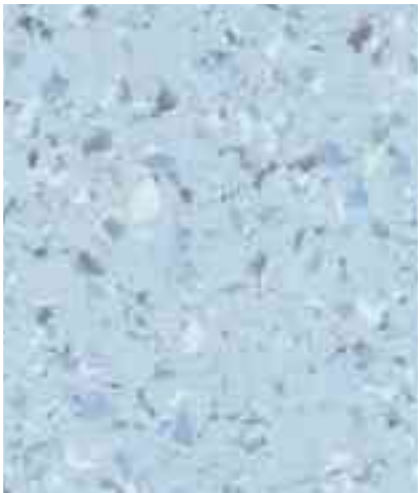
MIPOLAM ESPRIT



5320 Mixgrey
NCS: 3502-B / LRV: 36,9



5310 Mixdim
NCS: 2005-R80B / LRV: 51,1



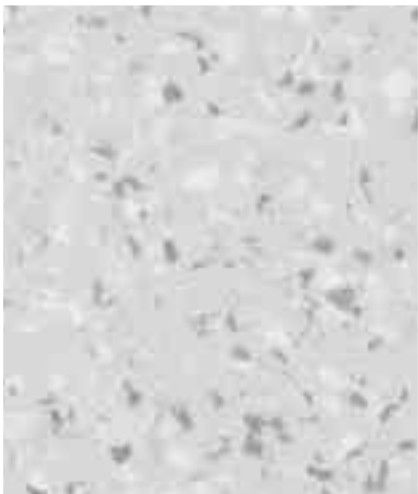
5306 Mixblue
NCS: 1020-R90B / LRV: 54,5



5340 Mist
NCS: 3500-N / LRV: 34,7



5329 Cumin
NCS: 2502-B / LRV: 44,9



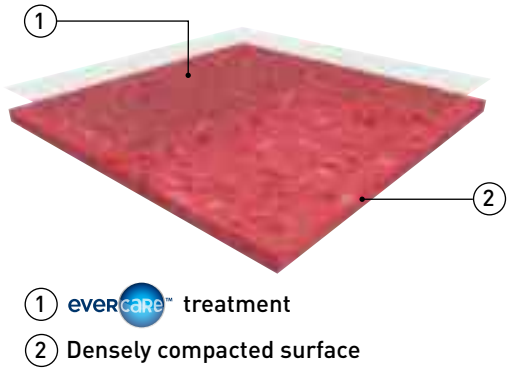
5312 White Pepper
NCS: 1502-B / LRV: 58,6



MIPOLAM ESPRIT



- High performance homogeneous flooring suitable for heavy duty traffic, available in sheet format.
- **Group T** wear rating compliant (very high resistance to traffic).
- Innovative true non-directional design, available in 24 colour tones.
- Modern surface with a matt finish.
- Evercare™ surface treatment: no wax for life.
- 100% recyclable.



MIPOLAM ESPRIT is a vinyl flooring homogeneous **pressed** in 2m sheets, with a thickness of 2mm and a **weight ≤ 2780 g**. The non-directional design with colour throughout the thickness is available in 24 references presenting a nice **matt finish**. This flooring is suitable for heavy duty traffic areas, and facilitates floor-wall junctions, angles and welding treatments. The flooring is equipped with **Evercare™**, patented surface treatment obtained by **UV laser cross-linking** offering the best **chemical resistance to the main products used in healthcare** environment as Betadine, eosin, hydro alcoholic solutions, making the maintenance easy and long lasting the flooring. This treatment **avoids applying any acrylic emulsion** throughout the lifetime of the product.

It is composed of 45% minerals, 22% of inexhaustible material and at least **25% of recycled 100% controlled**. It is free of formaldehyde, heavy metals and CMR 1 & 2 or vPvB (very persistent and very bio accumulative) or PBT (persistent, bio-accumulative and toxic) and is **REACH compliant**. COV emissions after 28 days (ISO 16000-6) are below detection levels with $<10 \mu\text{g} / \text{m}^3$ and this product is classified A + (the best class). On demand, MIPOLAM ESPRIT is available with phthalate free. The flooring is **antistatic** ($<2\text{kV}$), its residual indentation is $\leq 0.02 \text{ mm}$ to 150 minutes respecting EN 433. The flooring complies with **EN 649 (34-43)** offering a **group T** wear rating suitable for heavy duty traffic areas and **B_{fl}-s1** fire resistance.

EVERCARE™ TECHNOLOGY

AN EXCLUSIVE PATENTED TECHNOLOGY BY GERFLOR

THE BEST CHEMICAL STAIN RESISTANCE SURFACE TREATMENT

<p>Highly Durable: Exclusive surface treatment applied by UV laser cross-linking provides superior durability and an even surface thickness, creating an impenetrable barrier against stains and chemicals found in healthcare.</p> <p>Longer life expectancy.</p>	<p>evercare™ BY GERFLOR</p> <p>GERFLOR: EVEN THICKNESS</p>	<p>OTHER TREATED FLOOR COVERING</p> <p>COMPETITOR: MISSING TREATMENT AND UNEVEN THICKNESS</p>
<p>100% non-porous surface: The surface treatment creates a 100% non-porous barrier to all liquids and chemicals, keeping all stains floating on the surface.</p> <p>Simple and easy stain removal.</p>		

DESCRIPTION / <i>BESCHREIBUNG</i> / DESCRIPTION / <i>BESCHRIJVING</i> / DESCRIPCIÓN / <i>DESCRIÇÃO</i> / DESCRIZIONE			Mipolam Esprit
Total thickness / <i>Gesamtdicke</i> / Epaisseur totale / <i>Totale dikte</i> / Espesor total / <i>Espessura total</i> / Spessore totale	EN 428	mm	2
	ASTM F386-02	inch	0.080
Weight / <i>Flächengewicht</i> / Poids / <i>Gewicht</i> / Peso / <i>Peso</i> / Peso	EN 430	g/m²	2780
Width/length of sheet / <i>Bahnenbreite/-länge</i> / Largeur/longueur des lés / <i>Rolbreedte/Rollenlengte</i> / Ancho/largo de rollos / <i>Largura/comprimento dos rolos</i> / Larghezza/lunghezza dei teli	EN 426	cm/lm	200/20
	-	feet - inch	6'6" / 66"
Coverage / roll	-	m²	40
	-	sq.ft	430.56
Tile size / <i>Format Fliesen</i> / Format dalles / <i>Formaat der tegels</i> / Dimensiones de las losetas / <i>Dimensões dos mosaicos</i> / Dimensione delle piastre	EN 427	mm	608 x 608 *
Number of tiles per package / <i>Fliesen-Anzahl</i> / Nombre de dalles par boîte / <i>Aantal tegels per doos</i> / Cantidad de losetas/caja / <i>Quantidade dos mosaicos/caixa</i> / N° piastre per confezione	-	-	20
CLASSIFICATION / <i>KLASSIFIZIERUNG</i> / CLASSIFICATION / <i>CLASSIFICATIE</i> / CLASIFICACIONES / <i>CLASSIFICAÇÕES</i> / CLASSIFICAZIONI			
Norm/product specification / <i>Produkt Norm</i> / Norme produit / <i>Technische eigenschappen</i> / Normas / <i>Normas</i> / Norma prodotto	-	-	EN 649
	ASTM F 1913-04	-	compliant
European classification / <i>Europäische Klassifizierung</i> / Classement européen / <i>Europese classificatie</i> / Europea / <i>Europeia</i> / Europea	EN 685	class	34-43
Fire rating / <i>Brandverhalten</i> / Classement feu / <i>Brand classificatie</i> / Fuego / <i>Fogo</i> / Reazione al fuoco	EN 13501-1	class	Brfl - s1
	ASTM E648-08	class	Class 1
	CAN/ULC 102.2	-	-
Slip resistance wet / <i>Rutschhemmung</i> / Glissance humide / <i>Anti-slip</i> / Deslizamiento húmedo / <i>Escorregamento húmido</i> / Scivolosità umida	DIN 51130 / BGR 181	class	R9
Static electrical propensity / <i>Begehaufladung</i> / Potentiel de charge / <i>Elektrische eigenschappen</i> / Comportamiento electrostático / <i>Comportamento elettrostatico</i> / Resistenza elettrica	EN 1815	kV	< 2
PERFORMANCE / <i>TECHNISCHE EIGENSCHAFTEN</i> / PERFORMANCES / <i>TESTRESULTAAT</i> / CUALIDADES TÉCNICAS / <i>PERFORMANCES</i> / CARATTERISTICHE TECNICHE			
Wear resistance / <i>Verschleißverhalten</i> / Résistance à l'usure / <i>Slijtvastheid</i> / Abrasión / <i>Abrasão</i> / Resistenza all'abrasione	EN 660.2	mm³	≤ 2.0
Wear group / <i>Verschleißgruppe</i> / Groupe d'abrasion / <i>Groep slijtvastheid</i> / Grupo de abrasión / <i>Grupo de abrasão</i> / Gruppo di abrasione	EN 649	group	T
Type binder content / <i>Bindenmittelgehalt</i> / Teneur en agent liant	ISO 10581	Type	I
Dimensional stability / <i>Maßstabilität</i> / Stabilité dimensionnelle / <i>Maatvastheid</i> / Estabilidad dimensional / <i>Estabilidade dimensional</i> / Stabilità dimensionale	EN 434	%	Sheet ≤ 0.40
Residual indentation / <i>Resteindruck</i> / Poinçonnement statique rémanent / <i>Indrukbelasting</i> / Punzonamiento / <i>Punçoamento</i> / Impronta	EN 433	mm	0.02
Castor chair test / <i>Stuhlrollenbeanspruchung</i> / Essai de la chaise à roulettes / <i>Rolweerstand bureaustoelen</i> / Determinación del efecto de una silla con ruedas / <i>Resistência a cadeiras de rodas</i> / Resistenza al passaggio di sedie con rotelle (Type W / Typ W)	EN 425	-	OK
Thermal conductivity / <i>Wärmeleitfähigkeit</i> / Conductivité thermique / <i>Thermische weerstand</i> / Resistencia térmica / <i>Resistência térmica</i> / Resistenza termica	EN 12 524	W/(m.K)	0.25
Colour fastness / <i>Lichtechtheit</i> / Solidité lumière / <i>Lichtechtheid</i> / Resistencia a la luz / <i>Estabilidade das cores</i> / Solidità alla luce	EN 20 105 B02	degree	≥ 6
Dekontaminierbarkeit	DIN 25415-1 / ISO 8690		Sehr gut
Chemical resistance / <i>Verhalten gegenüber Chemikalien</i> / Résistance aux produits chimiques / <i>Chemische bestendigheid</i> / Resistencia a los productos químicos / <i>Resistência aos produtos químicos</i> / Resistenza ai prodotti chimici	EN 423	class	OK <i>beständig gegenüber nicht färbenden alkoholhaltigen Handdesinfektionsmitteln, Haushaltschemikalien und verdünnten Säuren und Laugen bei kurzzeitiger Einwirkung.</i>
Surface treatment / <i>Oberflächenvergütung</i> / Traitement de surface / <i>Oppervlaktebehandeling</i> / Tratamiento de superficie / <i>Tratamento de superficie</i> / Trattamento di superficie	-	-	Evercare™
Anti-bacterial activity (E. coli - S. aureus - MRSA)**	ISO 22196	-	> 99 % inhibits growth
ENVIRONMENT / INDOOR AIR QUALITY			
TVOC after 28 days / <i>TVOC (28 Tage)</i> / TVOC (28 jours) / <i>TVOC (28 dagen)</i> / TVOC (28 dias) / <i>TVOC (28 dias)</i> / TVOC (28 giorni)	ISO 16000-6	µg/m³	< 10
Certification	-	-	Floorscore™
CE marking / <i>CE Kennzeichnung</i> / Marquage CE / <i>EG-conformiteitsmerk</i> / Marca de conformidad CE / <i>Marca de conformidade CE</i> / Marcatura CE di conformità			
CE	EN 14041	-	
		-	

* Products available in tiles for a minimum quantity order of 500 sqm - ** The implementation of an effective cleaning method is the best defence against infection

INSTALLATION

Laying is the responsibility of the installer. Installation should be made in accordance with installation guidelines supplied and regularly updated by Gerflor's Technical Department. Installation should be carried out in accordance with local standards. Subfloor to be smooth, hard, clean and dry prior to laying. Where applicable the subfloor must incorporate an effective Damp Proof Membrane. The material must be allowed to acclimatise 24 hours prior to installation in a room temperature of between 18-24°C. All seams must be heat welded using Gerflor matching weld rod.

MAINTENANCE

Maintenance should be carried out regularly to retain the appearance and durability of the floor. The floor covering should be maintained with regular sweeping and damp mopping using a neutral cleaner, or auto scrubber machine with an appropriate pad.

Rubber leaves indelible stains on vinyl floorings: do not use mats with rubber backing and replace tubular furniture feet with those made of PVC or polyamide. Place mats of sufficient length at entrances to reduce outside sources of dirt.

Further installation and maintenance instructions are available from Gerflor.

TVOC 10
µg m³
after 28 days

Certification Limited
Environmental Profiles Scheme
Certificate Number ENP 359
BRE 'A' Rated Green Guide Product

floor score

ISO 14001

LCA
Life Cycle Analysis

Health & Safety

Recycling

Limited 10 years warranty
Within terms & conditions of warranty available on request

Gerflor

Don't forget our complementary ranges!

Handrails

Wall Coverings & Protections

Entrance mats

Skirtings & Profiles