

TARALAY EMOTION

gerflor.com



Gerflor[®]
theflooringroup

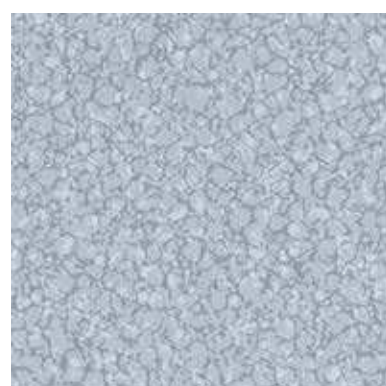
NATURALS



NCS: 4005-Y20R
LRV: 37.4



PANAME - 0802 Light Grey



NCS: 3502-B
LRV: 41.4



BORGO - 0607 Fumee



NCS: 4502-Y
LRV: 30.6



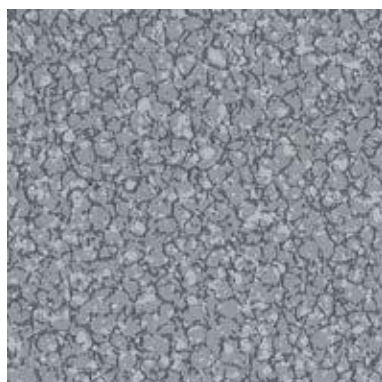
PANAME - 0804 Slate



NCS: 3502-Y
LRV: 42.5



COUTURE - 0707 Natural



NCS: 5502-B
LRV: 26.9



BORGO - 0606 Gris



NCS: 7002-Y
LRV: 14.6



COUTURE - 0708 Dark



NCS: 7005-Y50R
LRV: 13.3



PANAME - 0806 Anthracite

THE FRENCH TOUCH



NCS: 3005-G80Y
LRV: 57.2



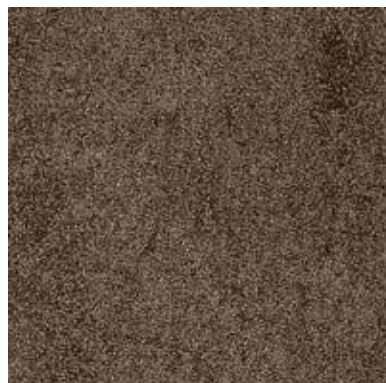
COUTURE - 0709 Cotton



NCS: 2010-Y20R
LRV: 57.3



COUTURE - 0710 Beige



NCS: 7005-Y50R
LRV: 11



PANAME - 0805 Brown



NCS: 6005-Y20R
LRV: 19.9



PANAME - 0803 Taupe



NCS: 3010-Y30R
LRV: 40.7



PANAME - 0801 Sable

EARTH / PASTELS



NCS: 5005-G80Y
LRV: 24.8

COUTURE - 0703 Mineral



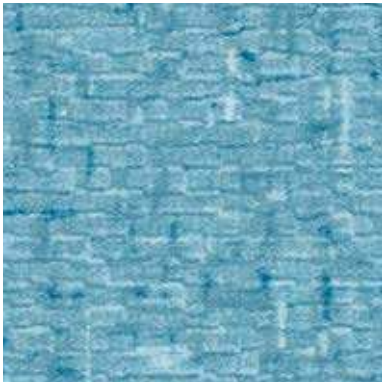
NCS: 5005-Y20R
LRV: 28.1

BORGO - 0611 Pearl



NCS: 5010-Y50R
LRV: 23.9

COUTURE - 0702 Coffee



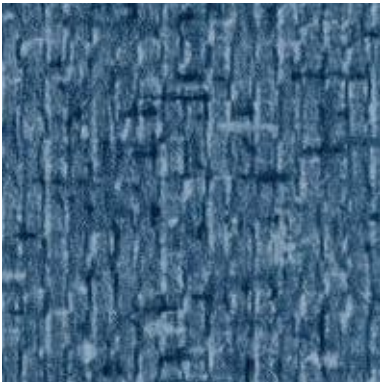
NCS: 4020-B30G
LRV: 29.3

COUTURE - 0705 Light Blue



NCS: 6020-B10G
LRV: 15

COUTURE - 0704 Denim



NCS: 6020-R90B
LRV: 14.9

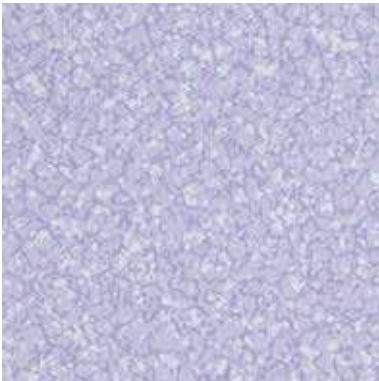
COUTURE - 0706 Indigo



NCS: 2002-Y50R
LRV: 54.3



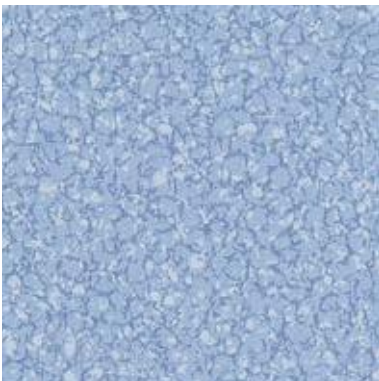
COUTURE - 0701 Ivory



NCS: 2020-R60B
LRV: 47.2



BORG0 - 0609 Lavender



NCS: 3020-R80B
LRV: 38.5



BORG0 - 0601 Azur



NCS: 4005-Y20R
LRV: 37.3



BORG0 - 0608 Pastel

COLORFULL



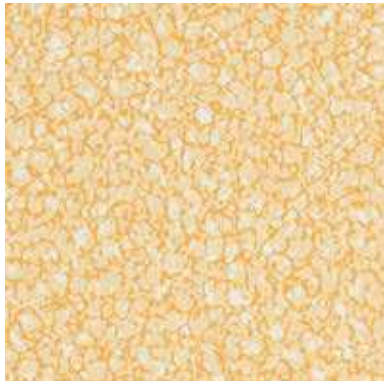
PANAME - 0808 Ocre

NCS: 3030-Y20R
LRV: 36.8



PANAME - 0807 Yellow

NCS: 2020-Y20R
LRV: 49.5



BORG0 - 0602 Sahara

NCS: 2020-Y20R
LRV: 53.3



BORG0 - 0603 Sand

NCS: 3010-Y30R
LRV: 38.5



BORG0 - 0604 Sienne

NCS: 3030-Y40R
LRV: 36.6





NCS: 2050-Y50R
LRV: 30.4

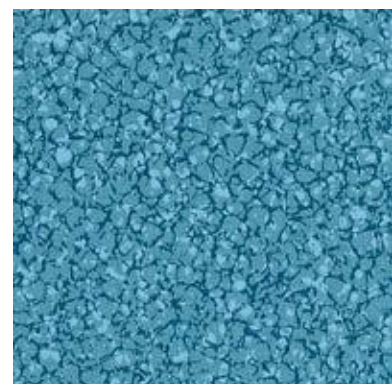
BORGO - 0614 Inulin



NCS: 3040-G60Y
LRV: 38.6

BORGO - 0615 Verdure

THE
FRENCH
TOUCH



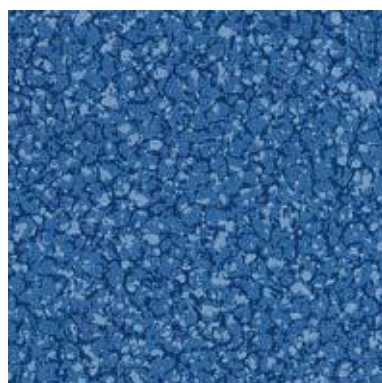
NCS: 4030-B10G
LRV: 23.8

BORGO - 0612 Sapphire



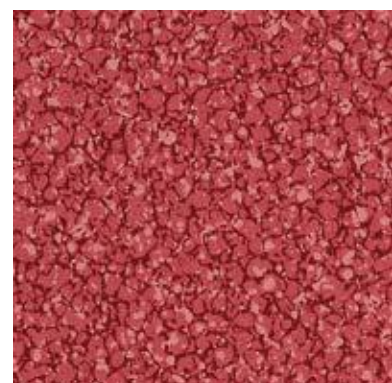
NCS: 2050-Y
LRV: 40.5

BORGO - 0613 Ginger



NCS: 5030-R80B
LRV: 13.8

BORGO - 0610 Navy



NCS: 3050-R
LRV: 14.3

BORGO - 0605 Red

WOODS



NCS: 5020-Y40R
LRV: 21.5



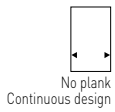
AMBOISE - 0902 Rustic



NCS: 5005-Y20R
LRV: 28.6



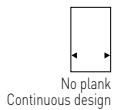
AMBOISE - 0903 Beige



NCS: 6502-Y
LRV: 15.5



ARCY - 1001 Pecan



NCS: 7000-N
LRV: 14.1



ARCY - 1002 Taupe



NCS: 7005-Y20R
LRV: 12.5



AMBOISE - 0901 Black



NCS: 3010-Y30R
LRV: 42.7



FONTENAY - 0504 Cream



NCS: 3020-Y30R
LRV: 41.2



CHINON - 0402 Light



NCS: 3030-Y30R
LRV: 33.3



CHINON - 0403 Honey



NCS: 4030-Y30R
LRV: 27.5



FONTENAY - 0503 Honey



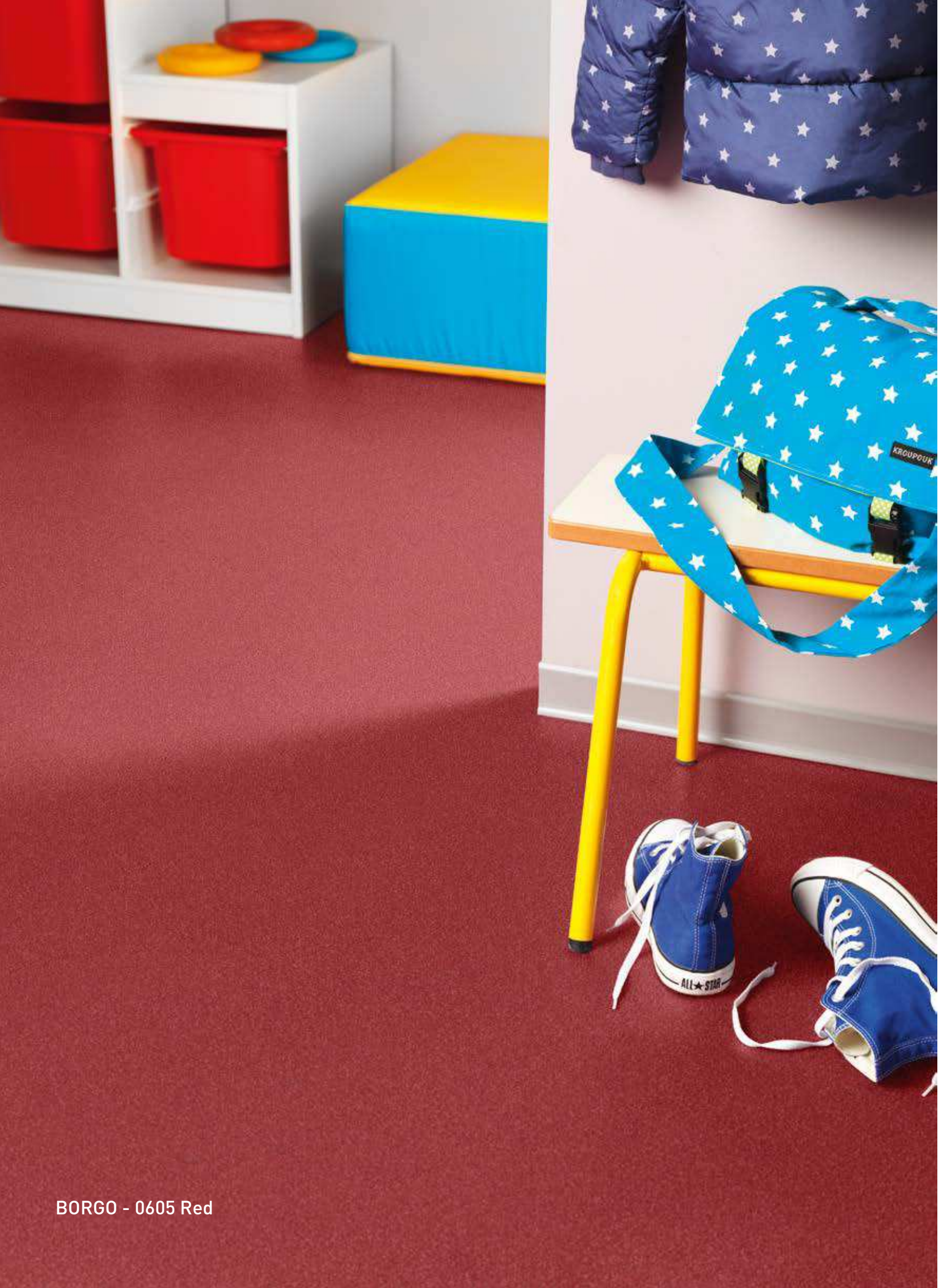
NCS: 6020-Y50R
LRV: 15.1



FONTENAY - 0505 Brown







BORG0 - 0605 Red



AMBOISE - 0903 Beige





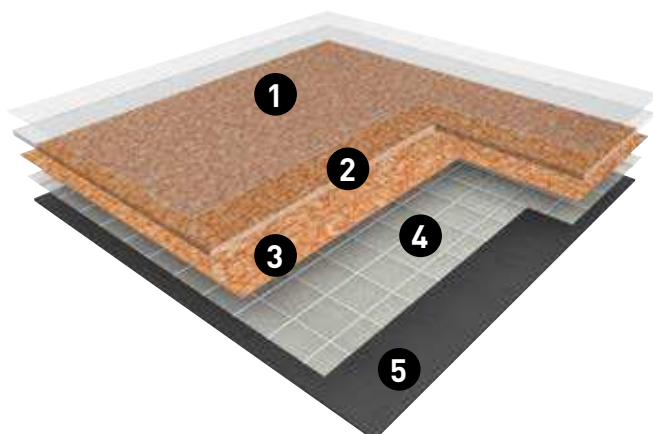
CHINON - 0402 Light

TARALAY EMOTION

 2 m	34-43	Protecsol®	 100% recyclable
---	-------	------------	---



BORG0 / COUTURE / PANAME / WOOD



- 1 **PROTECSOL** SURFACE TREATMENT
- 2 Transparent wear layer
- 3 Printed design
- 4 Fiber glass reinforced layer
- 5 Compact calendered back layer

▷ Protecsol® Surface Treatment
(easy maintenance & no wax)

▷ Transparent wear layer with printed design,
highest durability.

▷ Compact backing with fiber glass reinforced
layer, which improves the sustainability of
indentation performances and easy rolling.

▷ Suitable for high traffic areas
(0.7 mm wear layer thickness)



BORG0 - 0614 Inulin

TARALAY EMOTION

TARALAY EMOTION is a multilayered compact vinyl floorcovering, available in 2 m wide sheet, with a group T wear rating.

The product comprises a printed design that is protected by a transparent wear layer (0.70 mm thick) and a compact backing with fiber glass reinforced layer, which resists against static or dynamic perforation under rolling loads and provides good dimensional stability.

TARALAY EMOTION is protected by a UV cured surface treatment **Protecsol®** which facilitates ease of maintenance and eliminates permanently the need of an acrylic emulsion (metallisation).

It does not contain any heavy metals or CMR 1&2 and it is 100% compliant with REACH. The product emission rate of volatile organic compounds is < 100 µg/m³ (TVOC after 28 days – ISO 16000 -6). It is 100% recyclable.

TARALAY EMOTION				
BORGO / COUTURE / PANAME / WOOD				

DESCRIPTION

Total thickness	EN 428	mm	2	2.6
Thickness of wearlayer	EN 429	mm	0.7	0.7
Weight	EN 430	g/m ²	3100	4000
Width of sheet	EN 426	cm	200	200
Length of sheet	EN 426	lm	20	15

CLASSIFICATION

Norm / Product specification	-	-	EN 649	EN 649
European classification	EN 685	class	34-43	34-43
Fire rating	EN 13 501-1	class	Bfl-s1	Bfl-s1
Static electrical propensity	EN 1815	kV	< 2	< 2
Slip resistance wet	DIN 51 130	class	R9	R9






PERFORMANCES

Abrasion resistance	EN 660.2	mm ³	≤ 2	≤ 2
Abrasion group	EN 649	-	T	T
Type binder content	ISO 10582	typ	I	I
Dimensional stability	EN 434	%	≤ 0.4	≤ 0.4
Residual indentation	EN 433	mm	≤ 0.1	≤ 0.1
Castor chair test (type W)	EN 425	-	OK	OK
Thermal conductivity	EN 12 524	W/(m.K)	0.25	0.25
Colour fastness	ISO 105 - B02	degree	≥ 6	≥ 6
Chemical products resistance ⁽¹⁾	EN 423	-	Good	Good
Special maintenance treatment	-	-	Protecsol®	Protecsol®
Anti-bacterial activity [E. coli - S. aureus - MRSA] ⁽²⁾	ISO 22196	-	> 99% inhibits growth	> 99% inhibits growth

ENVIRONMENT / INDOOR QUALITY AIR

TVOC after 28 days	ISO 16000-6	µg/m ³	<100	<100
Certification	-	-	Floorscore™	Floorscore™

CE MARKING

	EN 14041	  
		

⁽¹⁾ Regarding the resistance to chemicals, please download the corresponding leaflet from our web-site.

⁽²⁾ The implementation of an effective cleaning method is the best defence against infection.

INSTALLATION: Installation should be carried out in accordance with local standards. Subfloor to be smooth, hard, clean and dry prior to laying. Where applicable, the subfloor must incorporate an effective Damp Proof Membrane. The material must be allowed to acclimatize 24 hours before installation in a room temperature of between 18-24°C. All seams must be heat welded using Gerflor® matching welding rod.

MAINTENANCE: No wax is needed after installation. Maintenance should be carried out regularly to retain in the appearance and durability of the floor. The floorcovering should be maintained with regular sweeping and damp mopping using a neutral cleanser, more intense cleaning should be carried out using a fine spray cleaning pad under a floor machine, or for larger areas combined machine cleaning.

Please contact Gerflor® offices for further information.

⚠ Rubber leaves indelible stains on vinyl flooring: do not use mats with rubber backing and replace tubular furniture feet with those made of PVC or polyamide.

ASIA: Gerflor Asia

Tel: +86 21 6357 8818 - Fax: +86 21 6357 8998

e-mail: gerflorasia@gerflor.com

AUSTRALIA/NEW ZEALAND: Gerflor Australasia Pty. Ltd

Australia Tel: 1 800 060 785 - New Zealand Tel: 0 800 630 119

e-mail: gerflor@gerflor.com.au

AUSTRIA/SWITZERLAND: Gerflor GmbH

Tel: +43 (0)72 29/70 800-0 - Fax: +43 (0)72 29/70 800-218

e-mail: austria@gerflor.com - switzerland@gerflor.com

BELGIUM/LUXEMBURG: Gerflor Benelux

Tel: +32 (0)3 766 42 82 - Fax: +32 (0)3 766 29 14

e-mail: gerflorbel@gerflor.com

CANADA: Gerflor International

Tel: +1 438 333 0752 - Fax: +1 438 380 5425

e-mail: gerflorcanada@gerflor.com

CHINA: Gerflor floorings (China) Co. Ltd.

Tel: +86 21 6357 8818 - Fax: +86 21 6357 8998

e-mail: gerflorchina@gerflor.com

FINLAND: Gerflor Oy

Tel: +358 (0) 10 6 17 5150 - Fax: +358 (0) 10 617 5152

e-mail: info@gerflor.fi

FRANCE: Gerflor - Service Express:



e-mail: contactfrance@gerflor.com

GERMANY: Gerflor Mipolam GmbH

Tel: +49 (0)22 41-25 30-0

e-mail: gerflormipolam@gerflor.com

Kunden-Service

Tel: +49 (0) 22 41-25 30-136 - Fax: +49 (0) 22 41-25 30-100

e-mail: kundenservice@gerflor.com

SAT Service und Anwendungstechnik

tel: +49 (0)22 41-25 30 555 - Fax: +49 (0)22 41-25 30 550

e-mail: technik@gerflor.com

IRELAND: Gerflor Ltd

Tel: +353 (0) 42 966 1431 - Fax: +353 (0) 42 966 1759

e-mail: gerflorirl@gerflor.com

ITALY: Gerflor S.p.A.

Tel: +39 02 90 40 10 - Fax: +39 02 90 42 74 84

e-mail: gerfloritalia@gerflor.com

LATIN AMERICA (Brazil): Gerflor América Latina

Tel: +55 11 38 48 20 20

e-mail: gerflor@gerflor.com.br

MIDDLE EAST: Gerflor Middle East

Tel: +966 13 847 1779 - Fax: +966 13 847 1781

e-mail: info@gerflorme.com

NETHERLANDS: Gerflor Benelux

Tel: +31 (0)40 266 17 00 - Fax: +31 (0)40 257 46 89

e-mail: gerflornl@gerflor.com

OTHER COUNTRIES: Gerflor International

Tel: +33 (0)4 74 05 40 00 - Fax: +33 (0)4 74 05 03 13

e-mail: gerflorcontract@gerflor.com

POLAND: Gerflor Polska Sp z o.o

Tel: + 48 61 823 34 01 - Fax: + 48 61 823 34 33

e-mail: info@gerflor.pl

PORTUGAL: Gerflor Iberia, SA

Tel: +351 21 843 95 49 - Fax: +351 21 846 55 44

e-mail: gerflorportugal@gerflor.com

RUSSIA: Gerflor zao

Tel./Fax: + 7 495 785 23 71

e-mail: gerflorrussia@gerflor.ru

SCANDINAVIA: Gerflor Scandinavia a.s.

Tel: + 47 64 95 60 70 - Fax: + 47 64 95 60 80

e-mail: gerflorscand@gerflor.no

SPAIN: Gerflor Iberia, SA

Tel: +34 91 653 50 11 - Fax: +34 91 653 25 85

e-mail: gerfloriberia@gerflor.com

UNITED KINGDOM: Gerflor Ltd

Sample service: Contractuk@gerflor.com

Office Tel: + 44 (0) 1926 622 600 - Fax: + 44 (0) 1926 401 647

USA: Gerflor North America

Tel: 877 GERFLOR (437 3567) - Fax: 847 394 3753

e-mail: info@gerflorusa.com

Health
& Safety

ISO 14001



Recycling

LCA
Life Cycle
Analysis

Committed to sustainable development

Gerflor *Don't forget* our complementary ranges!


Handrails

Wall Coverings
& Protections

Entrance mats



Skirlings & Profiles

and Be CONNECTED!


www.gerflor.com

Gerflor®
theflooringgroup